



Grand  
Panache



GRAND PANACHE

GRAND  
PANACHE



GRAND  
PANACHI



# **A NEW BENCHMARK FOR MODERN LIVING IN ACCRA**

Grand Panache blends visionary aesthetics with functional innovation. Every detail from material selection to lighting, spatial flow, and resident-only services reflects a commitment to quality and longevity.





## ABOUT US

### THE VISION BEHIND GRAND PANACHE

Grand Panache was conceived as a transformative residential development that elevates Accra's luxury real estate standards through meticulous design, sustainability, and unmatched livability. Built on a foundation of architectural excellence, the project embodies understated luxury and a lifestyle centred on comfort, security, and convenience.







# BUILT FOR THE MODERN INVESTOR AND GLOBAL RESIDENT

Whether purchased as a primary home, a corporate residence, or a long-term investment, units at Grand Panache offer resilient value. The project's strategic Airport Residential location ensures strong rental demand, high resale potential, and continuous appreciation driven by limited supply and rising urbanization.





## **AMENITIES**

**LIFESTYLE AMENITIES THAT ELEVATE DAILY LIVING**

Grand Panache delivers an immersive suite of curated amenities designed to support wellness, relaxation, productivity, and community living. Our facilities rival luxury hotel standards, crafted to enrich the resident experience while amplifying property value.











# WELLNESS & PRODUCTIVITY

Fully equipped fitness and wellness centre





# LIFESTYLE & LEISURE

Residents' lounge and social spaces



**CO-WORKING PODS WITH  
PRIVATE MEETING ROOMS  
FOR RESIDENTS**

















Three mannequins are the central focus of the display. The mannequin on the left wears a cream-colored, double-breasted coat with a high collar and large pockets, with a black and white geometric patterned scarf draped over its left arm. The middle mannequin is dressed in a grey V-neck sweater over a white top, paired with wide-leg grey trousers and black boots. The mannequin on the right wears a cream-colored, high-collared jacket and matching wide-leg trousers. A pair of black boots is placed on the floor next to the middle mannequin.

A decorative element consisting of a cylindrical pedestal covered in thick, cream-colored shaggy fur. On top of the pedestal sits a small, fluffy white hat with a brown pom-pom.

A large, decorative object made of three stacked, spherical balls of thick, cream-colored shaggy fur, resembling a snowman or a large hat.

A clothing rack on the left side of the display, featuring a grey long-sleeved top and a black skirt hanging prominently. Other garments, including a striped shirt, are visible in the background.

Additional clothing racks and mannequins are visible in the background, showing a variety of garments including jackets, sweaters, and trousers. The store has a clean, modern aesthetic with bright lighting and a polished floor.



# IN-UNIT PREMIUM FEATURES (SELECTED UNITS)

Fitted kitchen cabinetry







# BATHROOM



# PARKING & MOBILITY

Dedicated guest parking

Electric vehicle (EV) charging stations



# AMENITIES



## LIFESTYLE & LEISURE

- Infinity-edge rooftop swimming pool
- Rooftop sky lounge and terraces
- Residents' lounge and social spaces
- Landscaped green areas and children's play zone
- Sports court for badminton



## WELLNESS & PRODUCTIVITY

- Fully equipped fitness and wellness centre
- Co-working pods with private meeting rooms for residents



## SECURITY & ACCESS

- 24/7 concierge services
- Round-the-clock security
- Controlled access systems
- CCTV surveillance across common areas
- Electronic keycard access
- Electric perimeter security fencing
- Dedicated fire escape staircases



## PARKING & MOBILITY

- Secure multi-level basement parking
- Dedicated guest parking
- Electric vehicle (EV) charging stations



## BUILDING SYSTEMS & INFRASTRUCTURE

- High-speed elevators
- Energy-efficient building systems
- Full backup power supply with silent generators
- Backup water storage and supply systems
- Advanced firefighting and reservoir systems



## PROPERTY MANAGEMENT

- Professional on-site property management



## IN-UNIT PREMIUM FEATURES (SELECTED UNITS)

- Fitted kitchen cabinetry
- Refrigerator
- Microwave
- Washing machine
- Air-conditioning units
- Water heaters

Grand Panache's location ensures convenience, security, and sustained asset growth, making it a prime choice for residents and investors seeking a premium urban address.

**UNIT OPTIONS  
INCLUDE:**

1-Bedroom Executive  
Suites

2-Bedroom Luxury  
Residences

3-Bedroom Family  
Homes





#### **UNIT TYPES**

Residences Crafted for Luxury, Comfort, and Function  
Grand Panache offers a range of elegantly laid-out units designed to accommodate diverse lifestyles, from young professionals and families to corporate tenants and international buyers.

#### **UNIT OPTIONS INCLUDE:**

- 1-Bedroom Executive Suites
- 2-Bedroom Luxury Residences
- 3-Bedroom Family Homes
- Penthouse Suites

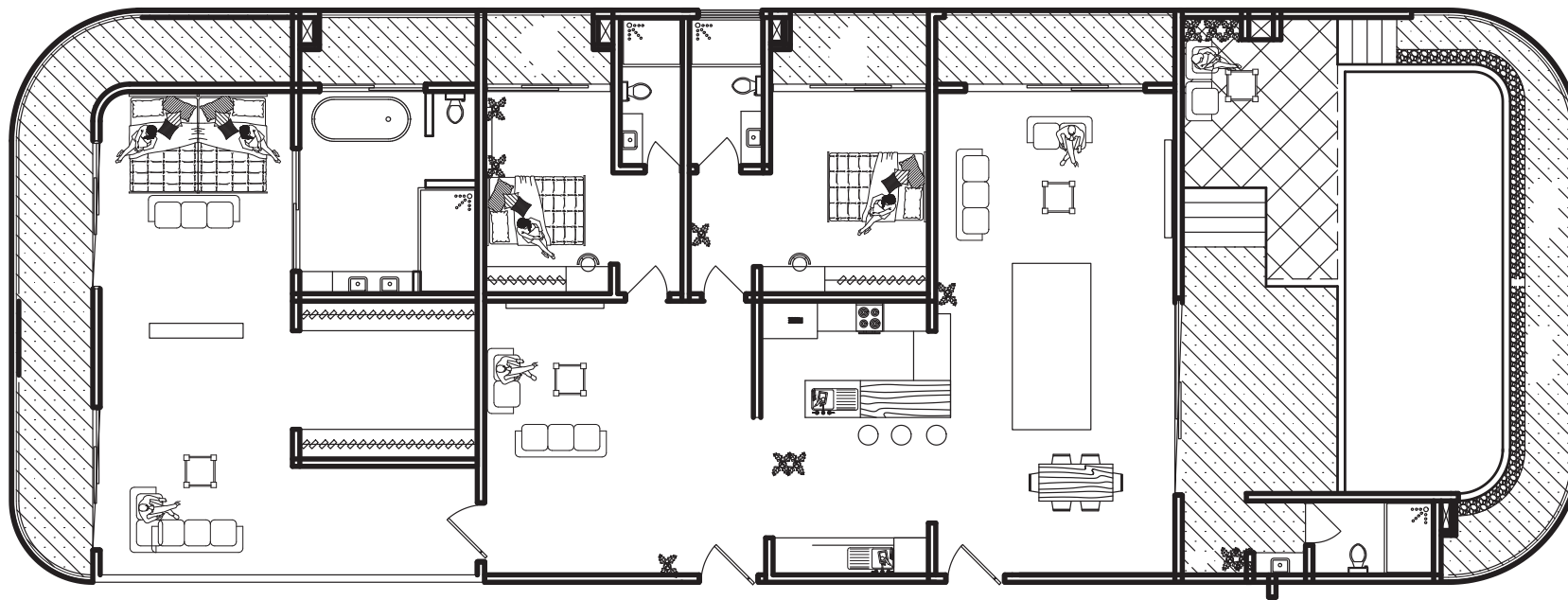
Each unit features high-end finishes, natural lighting, modern appliances, smart-home technology, and premium flooring and cabinetry. Every square metre is crafted for both comfort and long-term value appreciation.



# PENTHOUSE SUITES

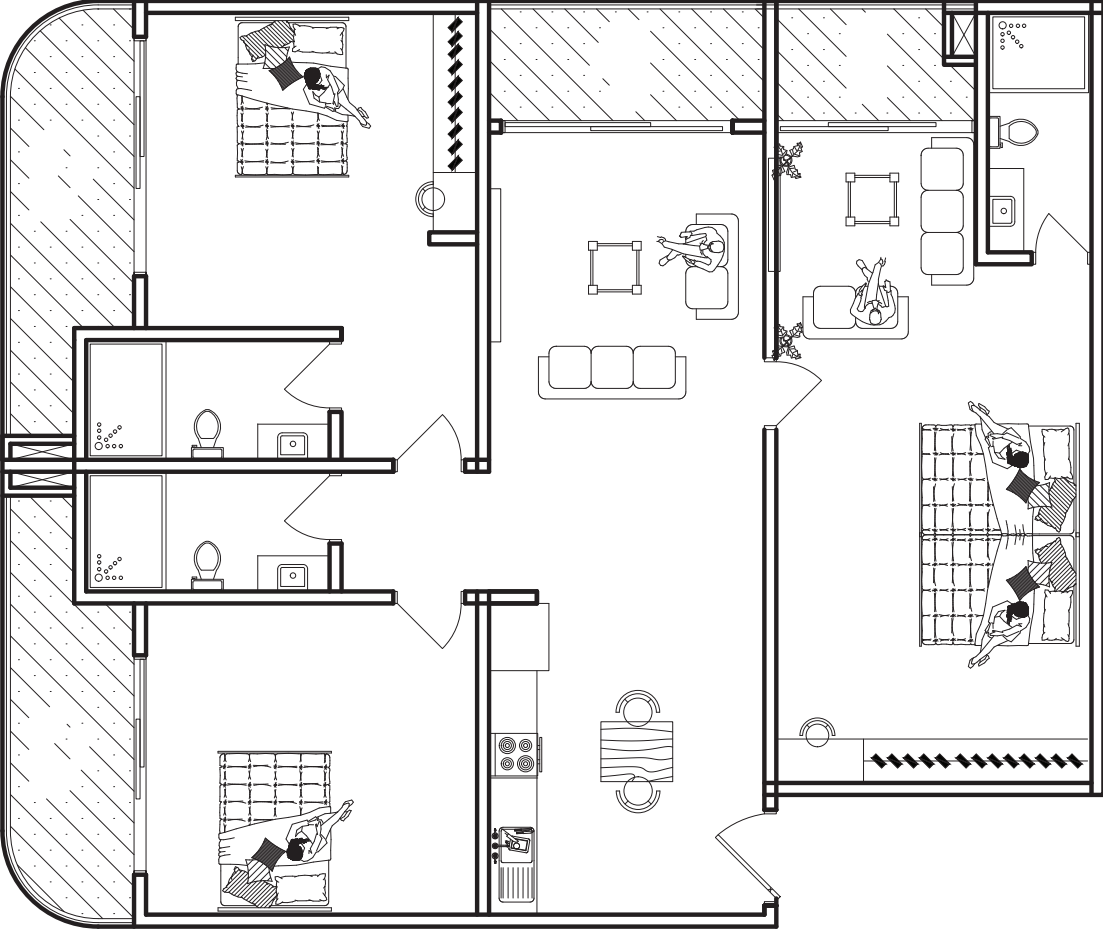
Each unit features high-end finishes, natural lighting, modern appliances, smart-home technology, and premium flooring and cabinetry. Every square metre is crafted for both comfort and long-term value appreciation.

# PENTHOUSE SUITES



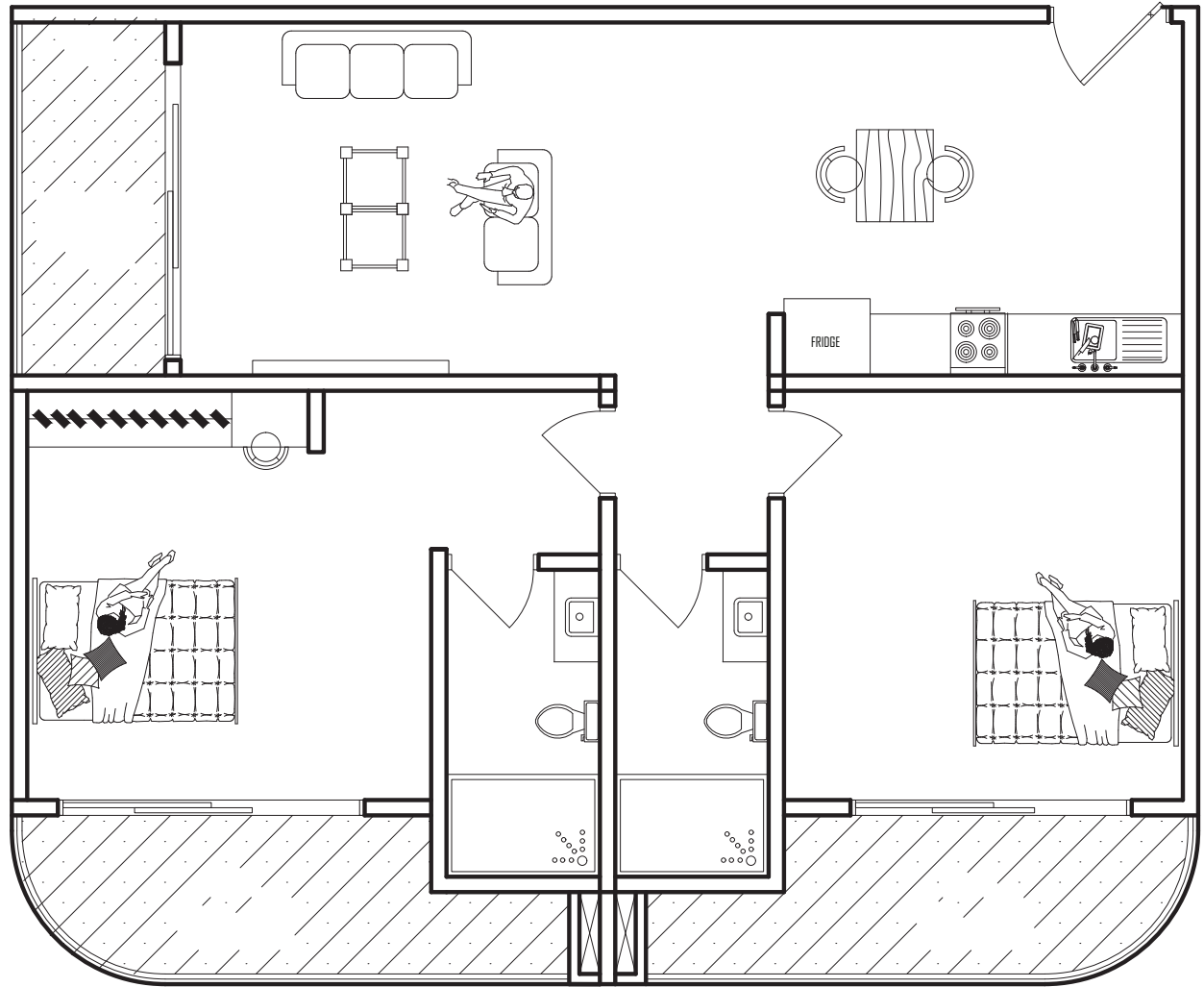
# FAMILY HOMES

3-Bedroom Apartment



# LUXURY RESIDENCES

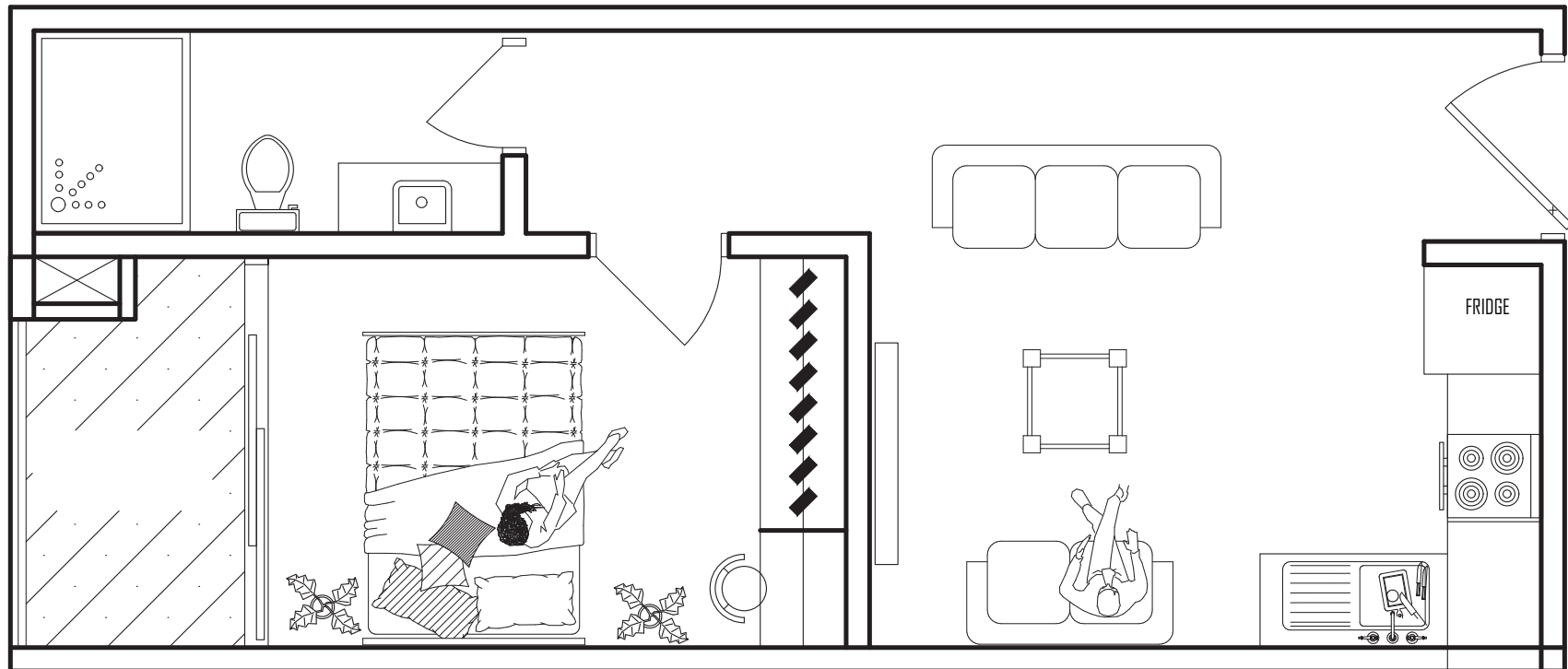
2-Bedroom Apartment



111.89m

# EXECUTIVE SUITES

1 Bedroom Apartment



42.28m

# PRICE LIST



ONE BEDROOM			TWO BEDROOM			THREE BEDROOM		
TYPE	FLOOR AREA (M <sup>2</sup> )	PRICE	TYPE	FLOOR AREA (M <sup>2</sup> )	PRICE	TYPE	FLOOR AREA (M <sup>2</sup> )	PRICE
A	36.75	\$ 97,374	A	83.30	\$ 288,635	A	138.94	\$ 481,436
B	38.19	\$106,264	B	99.35	\$ 323,384	<b>PENTHOUSE</b>		
C	41.98	\$132,245	C	101.46	\$ 319,587	TYPE	FLOOR AREA (M <sup>2</sup> )	PRICE
D	43.80	\$137,980				A	291.47	\$ 1,071,143
E	44.99	\$ 141,726				B	340.62	\$ 1,251,783
F	52.74	\$ 166,131						

Begin Your Journey with Grand Panache  
Our dedicated client services team is ready to assist with  
inquiries, unit reservations, investment consultations, and  
personalized tours






---

# CONTACT DETAILS

## ROSEWOOD REAL ESTATE SERVICES

---

 [info@rosewoodgh.com](mailto:info@rosewoodgh.com) | [sales@rosewoodgh.com](mailto:sales@rosewoodgh.com)

 [@rosewoodghana](https://www.instagram.com/rosewoodghana)

 [Rosewood Real Estate Services](https://www.facebook.com/RosewoodRealEstateServices)

 [www.rosewoodgh.com](http://www.rosewoodgh.com)

 +233 20 977 6428 ; +233 27 155 5666 ; +44 7437 586493