



The Residences





# Sanctuary is in your Nature

---

<b>03</b>	Introduction
<b>05</b>	Vision
<b>07</b>	Concept
<b>26</b>	Pricing



## YOUR SANCTUARY YOUR HOME

---

444 Residences is a one-of-a-kind, exclusive residential community of homes unlike any you've ever seen. Never before has the comfort of home felt so much like a rewarding escape. Nestled along the scenic coastline of Gomoa Fetteh, Ghana, Africa. 444 Residences reflects a modern design, perfectly crafted to the hillside it occupies.

BRINGING THE WONDERS OF THE  
PHYSICAL WORLD INTO HARMONY  
WITH THE PROMISE OF THE  
HUMAN SPIRIT



# 01 VISION

444 is an exclusive sanctuary that meets you where you are and gives flight to where you're going next. A place that connects you with nature, yourself and your community like nowhere else you've ever been.



## ONE WITH NATURE ONE WITH YOUR PATH

---

We help the world's most enlightened pathfinders re-discover the simplicities of life, by providing them with premium residences, in the most sustainable environment, without sacrifice to world-class design, service and location.



### CONNECTEDNESS

We believe our work should bring people, nature, design and tech together in ways that ease the soul.



### ECO-CONSCIOUSNESS

We believe every action we take should be done with a mindfulness and compassion for our planet.



### SIMPLICITY

We believe when we keep things simple, we find clarity, appreciate beauty, and focus on only what's important.



### OPTIMISM

We believe the contagious power of positivity is what fuels balance, self-assurance and forward progress.

# 02

## CONCEPT

444 Residences sets a completely new standard in exclusive community living as one of the world's most transcendent, luxury residential sanctuaries. Every detail is designed with the environment and community in mind.



## MODERN LUXURY RE-IMAGINED

---

444 is a symbol of personal accomplishment, of validation and of self-assurance. Assurance that you're on the right path. That your quest is righteous. That your heart, mind and feet are where they should be right now. 444 is not a celebration of your arrival, it's a celebration of your pursuit. Never before has the comfort of home felt so much like a rewarding escape.

A tropical beach scene at sunset. The sky is a mix of orange, yellow, and blue. Several palm trees are silhouetted against the sky. In the foreground, a person is sitting on a swing that hangs from a palm tree on the left. The ocean is visible in the background.

# GO MOA FETTEH



## LOCATION & VICINITY MAP

444 residences Gomoa Fetteh is found between Nyanyano and Gomoa Fetteh. Excluding rush hour traffic, residents can reach 444 Residences Gomoa Fetteh within 75-90 minutes from Kotoka International Airport in Accra, Ghana.







## 18 Private Oceanside **Residences**



# SITE PLAN

## FEATURES PER UNIT

- 3 Bedrooms per unit
- 3<sup>1/2</sup> Bathrooms
- Roof-top lounge
- Padio Area
- 1 infinity pool per unit
- 360 Panoramic windows & doors
- Outdoor Dining

## PROPERTY OVERVIEW

Number of Units : 18 Units

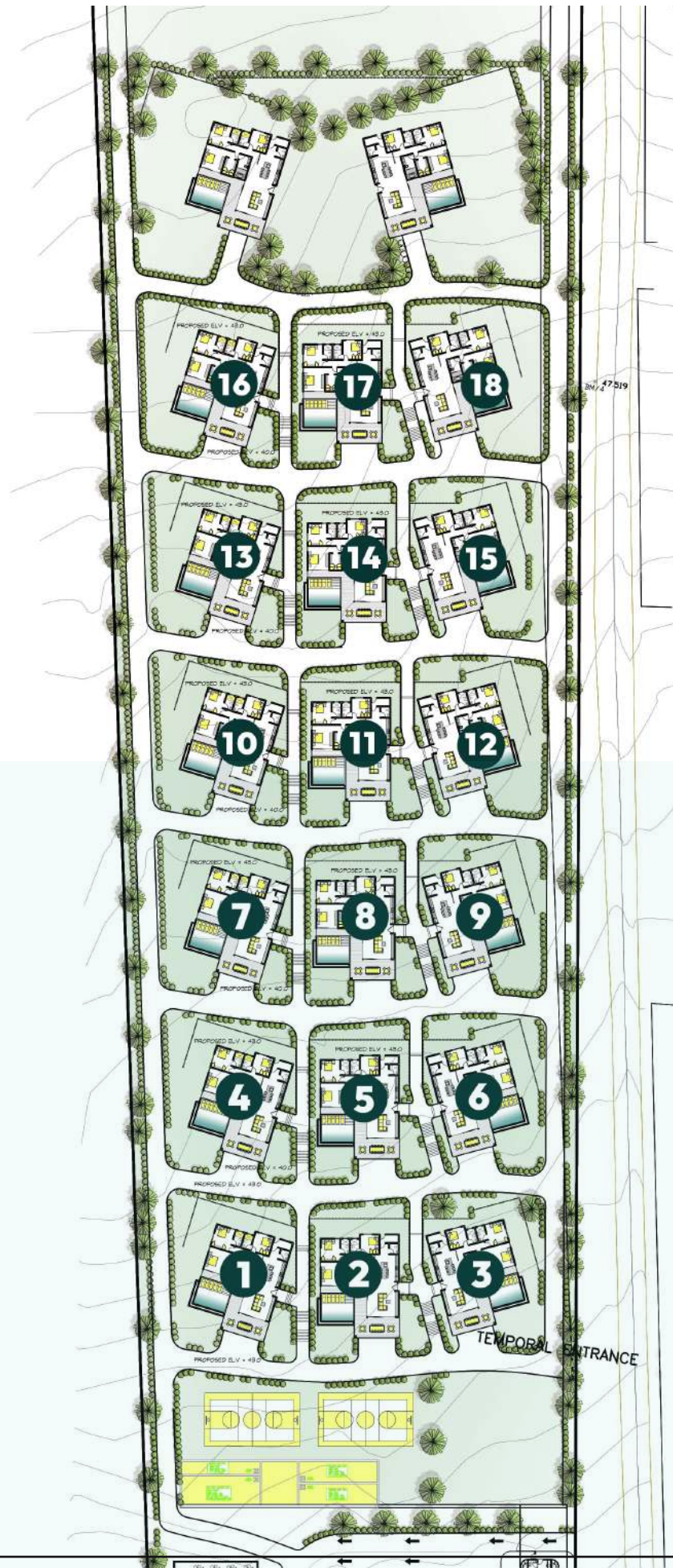
Number of Bedrooms 3 per Units

Number of Beds : 48 Beds

Pools : One Infinity pool per Unit

Size : 300m<sup>2</sup> net area - 500m<sup>2</sup> gross area

Land area per Unit : .33 acres per unit



Roof-top View



Bathroom



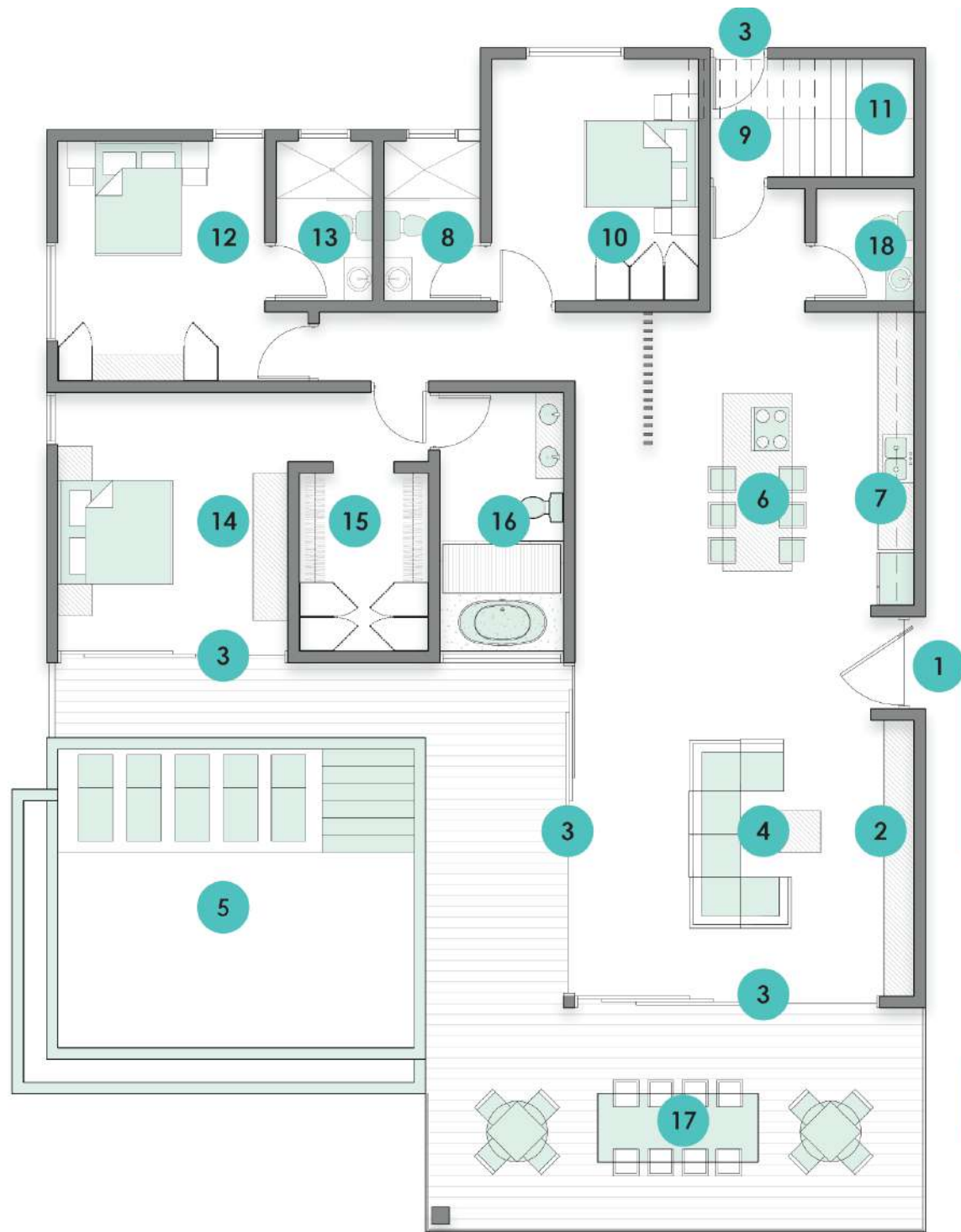




LIVINGROOM &  
KITCHEN



# MAIN FLOOR PLAN



Bedroom View

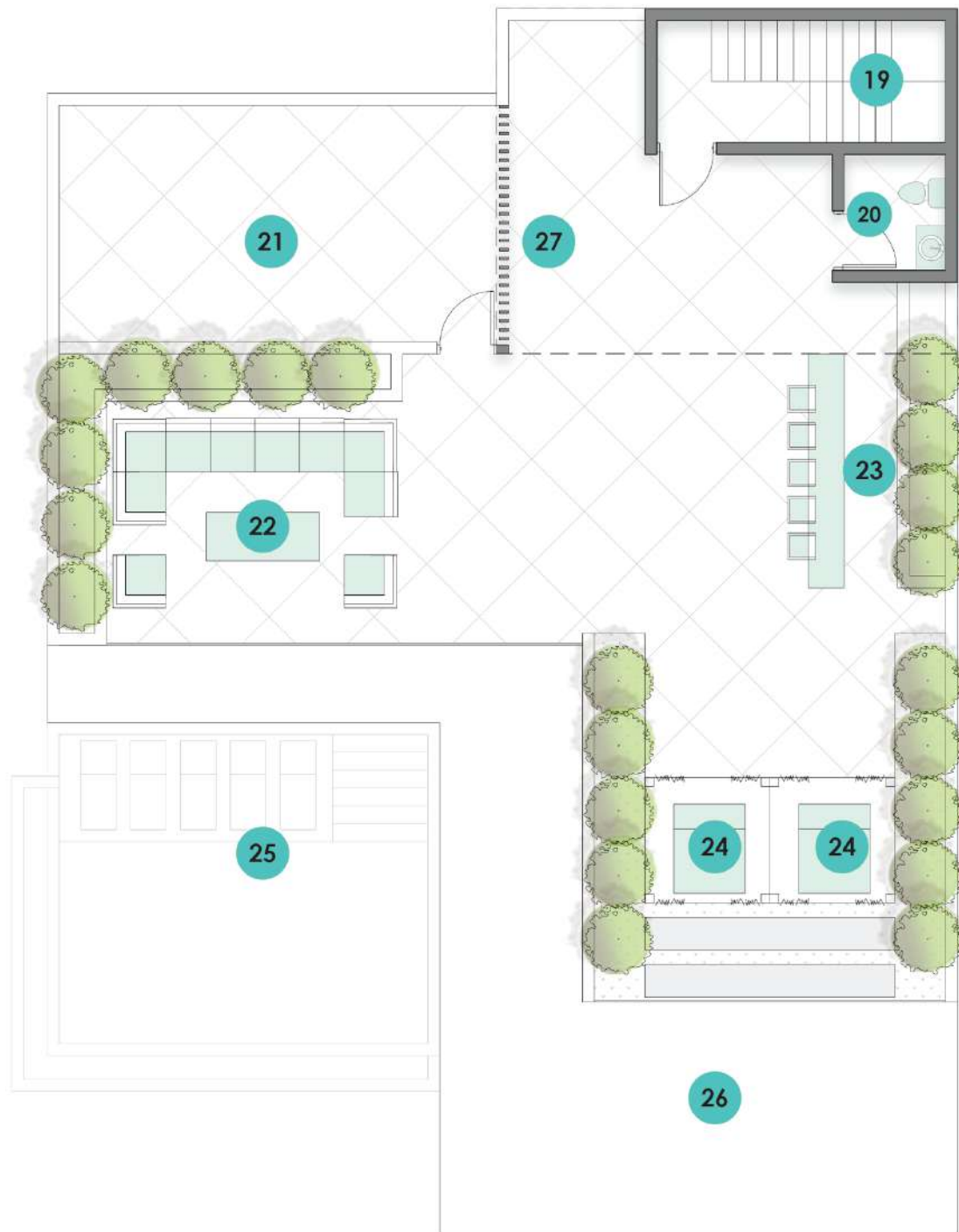


Kitchen View

- 1 ROOM ENTRY
- 2 ENTERTAINMENT WALL
- 3 ACCESS TO OUTDOOR SPACE
- 4 LIVING ROOM
- 5 OCEAN VIEW WITH INFINITY POOL
- 6 KITCHEN ISLAND + DINING
- 7 KITCHEN
- 8 BATHROOM #1
- 9 STORAGE
- 10 BEDROOM #1
- 11 STAIRS TO ROOFTOP PATIO
- 12 BEDROOM #2
- 13 BATHROOM #2
- 14 MASTER BEDROOM
- 15 MASTER CLOSET
- 16 MASTER BATHROOM
- 17 OUTDOOR PATIO AND DINING
- 18 POWDER ROOM



# ROOF-TOP PLAN



Pool View



Outdoor Dinning View

- 19 STAIRS TO MAIN FLOOR
- 20 ROOFTOP POWDER ROOM
- 21 MECHANICAL AND STORAGE
- 22 OUTDOOR LOUNGE
- 23 OUTDOOR BAR AREA
- 24 OPEN CABANA
- 25 POOL BELOW
- 26 ROOF CANTELEVER
- 27 WOOD SLATS





OUTDOOR  
DINNING & POOL



# 03 PRICING

We believe that the best way to sustain success is to lift the entire community around where we do our business. In the case of 444 , that will involve the entire macro catchment area of Nyanyano and Gomoa Fetteh .



## UNIT PRICING

---

444 Residences are inserted into the hilly terrain above 11-11 Resort. Residents enjoy a 360 panoramic view and an amazing view of the ocean from the units. Because of the elevations change, there are 6 Tiers of dwelling units.

Unit pricing is determined by floor elevation. Starting from **\$350,000** a person can purchase a unit at 444 Residences.

# THE TIERS & PAD LEVELS

TIERS	UNITS	ELEVATION	Price (\$)
A	3 Units	0.00 (Benchmark @ +43.5)	350,000
B	3 Units	12.5'	385,000
C	3 Units	25.0'	420,000
D	3 Units	37.5'	455,000
E	3 Units	50.5'	490,000
F	3 Units	62.5'	525,000





## Sanctuary is in your Nature

---

Are you ready to secure your dreams?

The time is now to invest in an oceanside property and it's tranquil environment.

Visit us at [444residences.com](https://www.444residences.com) to learn more about our project and to stay up to date on our progress.

email us directly at  
[info@444residences.com](mailto:info@444residences.com)




---

# CONTACT DETAILS

## ROSEWOOD REAL ESTATE SERVICES


---

 [info@rosewoodgh.com](mailto:info@rosewoodgh.com) | [sales@rosewoodgh.com](mailto:sales@rosewoodgh.com)

 [@rosewoodghana](https://www.instagram.com/rosewoodghana)

 [Rosewood Real Estate Services](https://www.facebook.com/RosewoodRealEstateServices)

 [www.rosewoodgh.com](http://www.rosewoodgh.com)

 +233 20 977 6428 ; +233 27 155 5666 ; +44-7984 674 0651