

Bushwick
GROVE

East Legon



PAGE 4

Location

PAGE 5

Facilities

PAGE 6-13

Visuals

PAGE 15-16

Floor plans

PAGE 17

About us

PAGE 18

Financing

PAGE 19

Contact Us

Welcome to Bushwick Grove, an idyllic oasis of modern luxury living, nestled in a serene location, designed to provide the ultimate in comfort, style, and elegance. We invite you to explore our exceptional offerings and experience the epitome of contemporary living.

Welcome.

Live perfectly placed

Curious about what makes your Bushwick Grove home so wonderful? Live like a local and find out yourself at the newly constructed 3 bedroom townhomes in the East Legon neighborhood. It boasts a central location, allowing it to fulfill any convenience you may need. Residents of Bushwick Grove at East Legon will enjoy superior schools, excellent shopping, many restaurants, recreational activities. Several business centers are nearby and the community is located near major commuting routes.

SCHOOLS

- American international school - 5 minutes
- Galaxy international school - 10 minutes
- Lycee Francais international d'Accra - 11 minutes
- Corner stone International academy - 10 minutes

DINING

- Villandro Residence - 8 minutes
- Kozo - 15 minutes
- Skybar - 14 minutes
- Polo Club Restaurant - 12 minutes

SPORTS/RECREATION

- Polo Club - 12 minutes
- Lizzys sports center - 6 minutes
- Achimota golf course - 22 minutes
- Bliss Family Entertainment - 15 minutes

SHOPPING

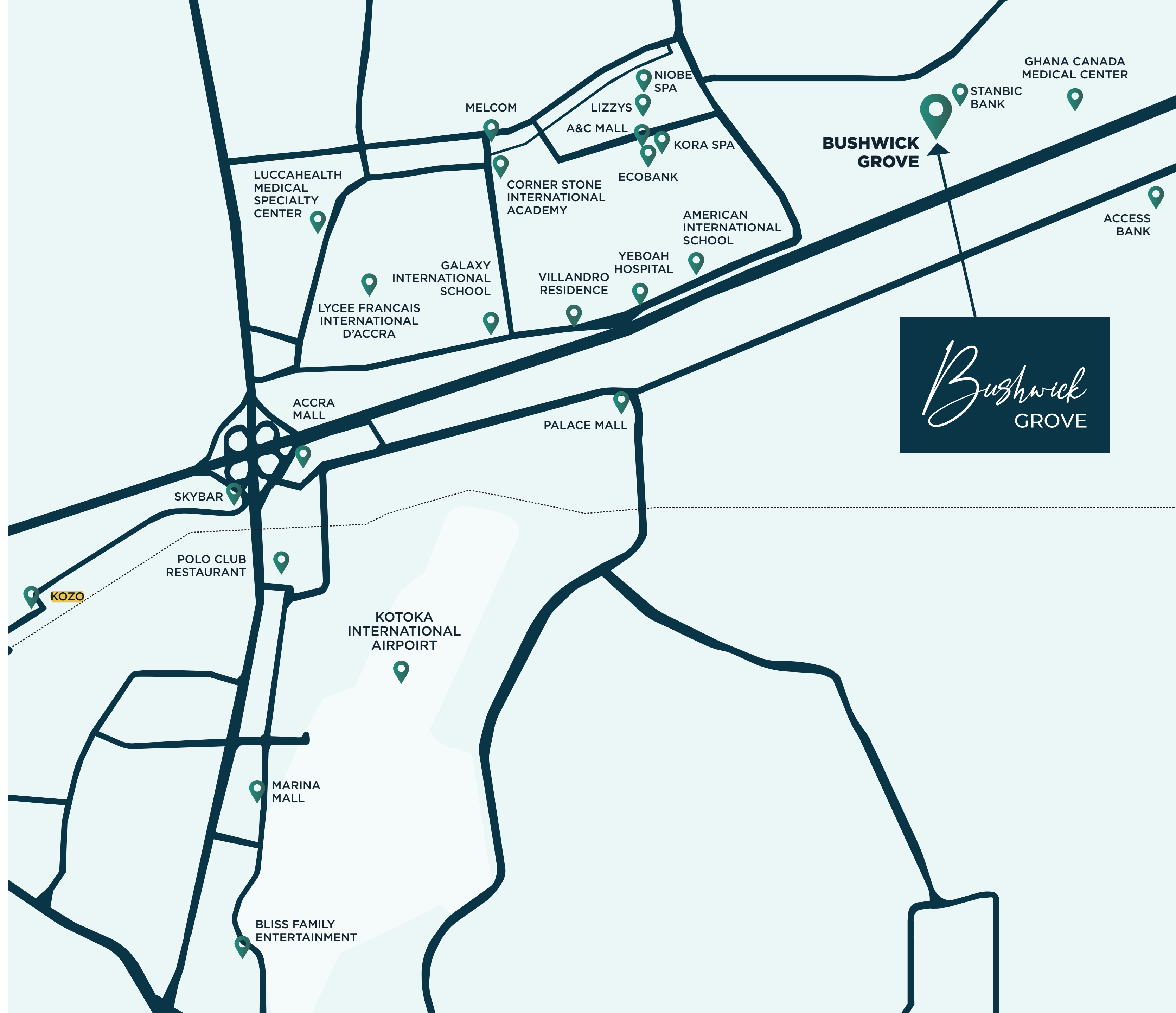
- A&C mall - 6 minutes
- Accra mall - 13 minutes
- Marina mall - 15 minutes
- Melcom - 9 minutes
- Palace mall - 10 minutes

HEALTHCARE

- Ghana Canada medical center - 4 minutes
- Yeboah hospital - 5 minutes
- LuccaHealth Medical Specialty Center - 11 minutes
- EuraCare- 18 minutes

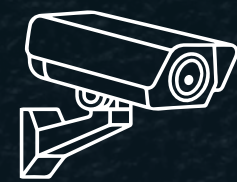
BANKING

- Stanbic Bank - 2 minutes
- Access Bank - 2 minutes
- Ecobank - 6 minutes



Our Facilities

The estate offers a range of modern amenities and facilities, including an optional swimming pool, landscaped gardens, and 24-hour security. Each unit comes equipped with air conditioning, fitted wardrobes, a fully fitted kitchen and smart home automation, allowing you to control lighting, temperature and security at the touch of a button.



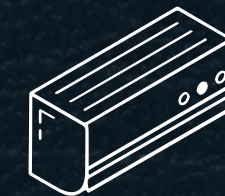
CCTV INSTALLATION



STUDY ROOM/LIBRARY



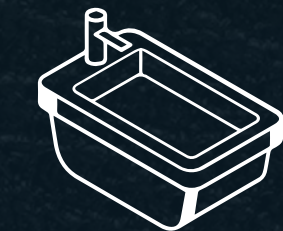
STORAGE ROOM



4 AIR CONDITIONERS



OUTDOOR KITCHEN AREA



BATH TUB IN MASTER BEDROOM



SMOKE DETECTORS



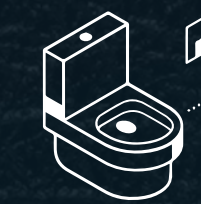
GREENERY/PLANTS



FITTED WARDROBES



24 HOUR SECURITY



CONCEALED W/C SYSTEM



SMART HOME FEATURES (APPLIANCE AND LIGHTING CONTROL SYSTEM)

OTHER AMMENITIES INCLUDE:

- BOYS/STAFF QUARTERS
- STAND BY GENERATOR/BACK-UP POWER
- AUTOMATED ESTATE GATE
- FITTED KITCHEN (MICROWAVE, ELECTRIC STOVE WITH EXTRACTOR, OVEN,)

- FAMILY AREA
- WALK-IN CLOSET
- HIGH CEILINGS
- FLOOR TO CEILING WINDOWS
- HIGH CEILING DOORS

- BIODIGESTER
- ELECTRICAL FENCING/ALARM SYSTEMS
- QUARTZ COUNTERTOP





Our bathrooms feature modern fixtures, including a bathtub or shower, toilet, and sink. They also offer ample storage space, with customized cabinetry and modern lighting fixtures.





Our home offices are designed to promote productivity, with ample lighting and comfortable seating. Each office also comes equipped with air conditioning ensuring a comfortable and connected workspace.



Our kitchens feature top-of-the-line appliances, including a oven, stove and microwave. They also offer plenty of storage, with modern cabinetry and a large outdoor kitchen.



Our bedrooms feature comfortable bedding, large windows, and modern lighting fixtures. Each bedroom also comes equipped with air conditioning, providing a comfortable sleeping environment.



Our living rooms feature large windows, allowing for plenty of natural light and stunning views. They also come equipped with air conditioning, and modern lighting fixtures.

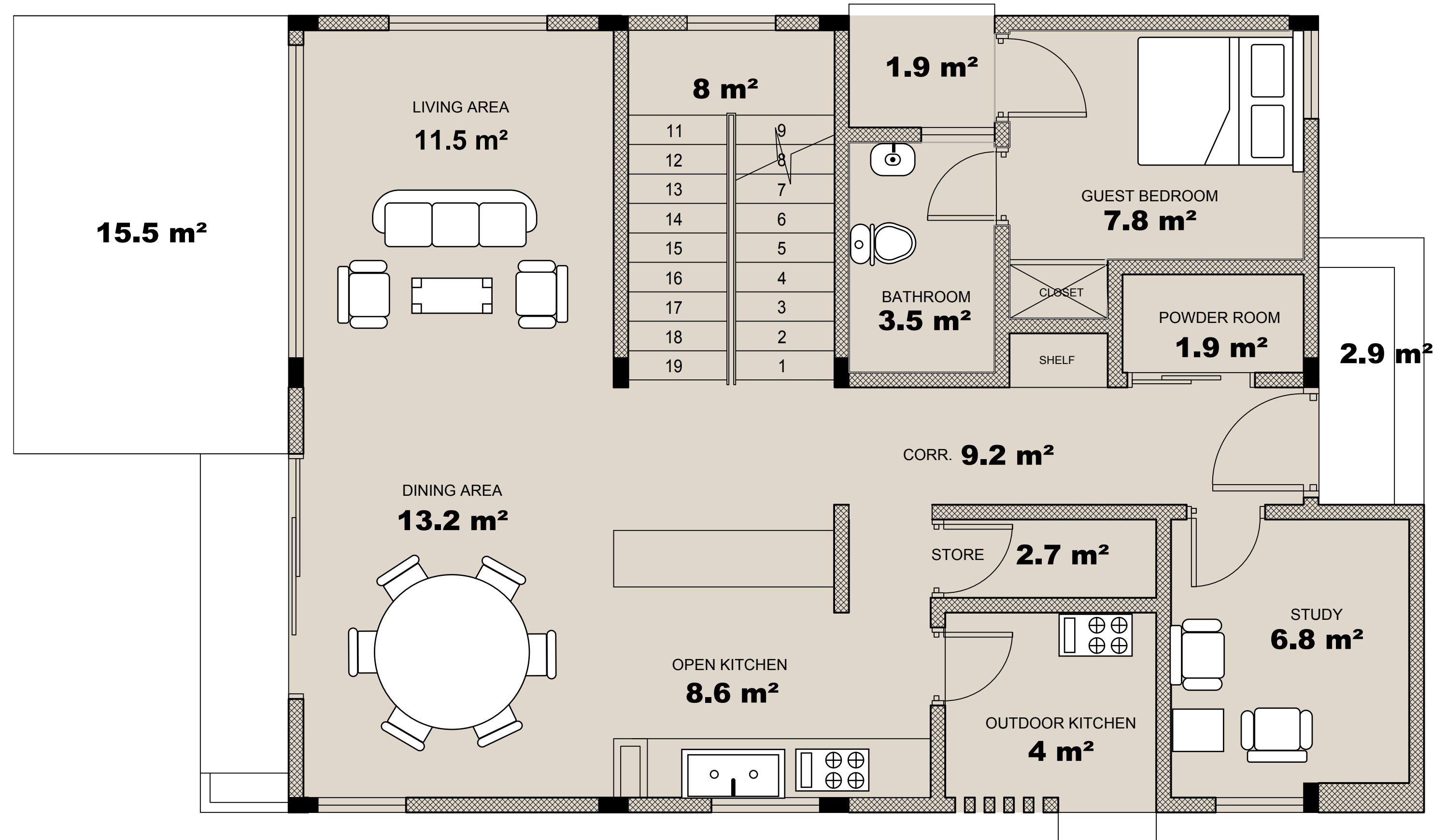


Our backyards feature a variety of amenities, including outdoor seating, and an optional swimming pool.

Typology 1

Ground Floor

With an open floor plan and plenty of natural light, the ground floor of your Bushwick Home is the perfect space for relaxing and entertaining. It is designed for comfortable and modern living, with a spacious living room, Study, dining area, and contemporary kitchen that seamlessly flow together.

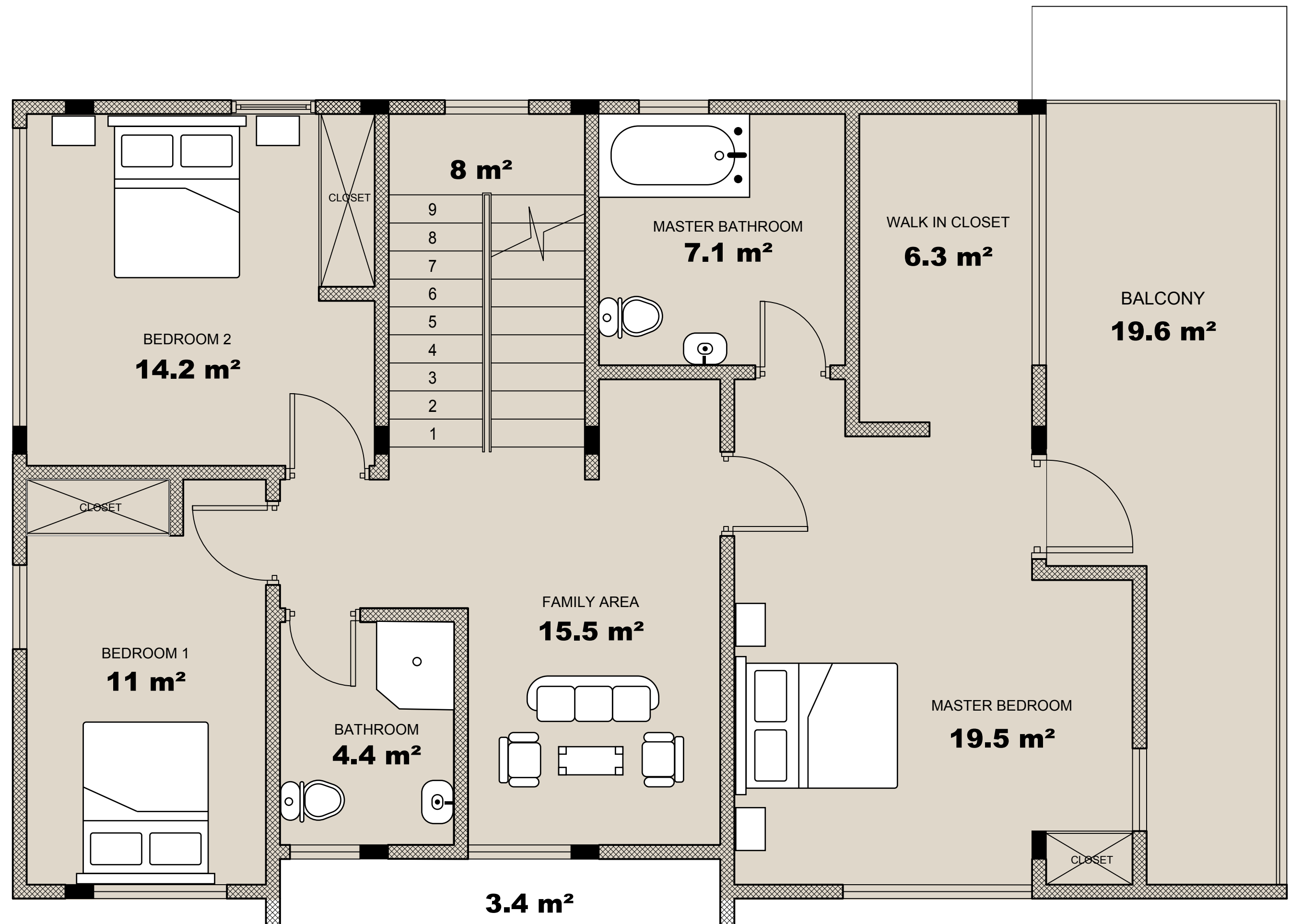


GROUND FLOOR PLAN

100 SQM GROUND FLOOR

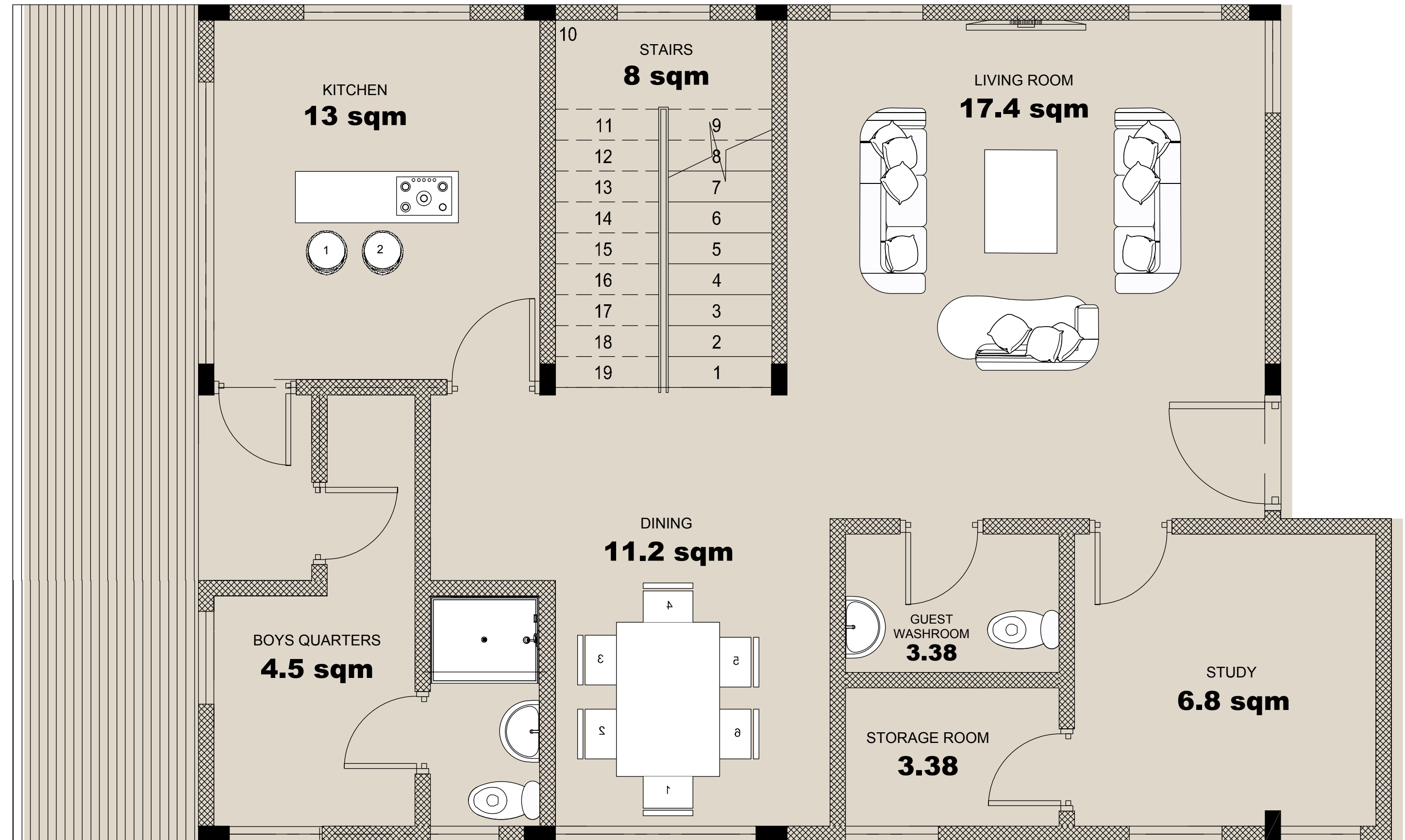
First Floor

The First floor of your Bushwick Grove home is dedicated to rest and relaxation, with three well-appointed bedrooms and three modern bathrooms. The master bedroom features a spacious walk-in closet and a luxurious en-suite bathroom with a soaking tub and a separate shower. The other two bedrooms share a bathroom, making it ideal for families with children.



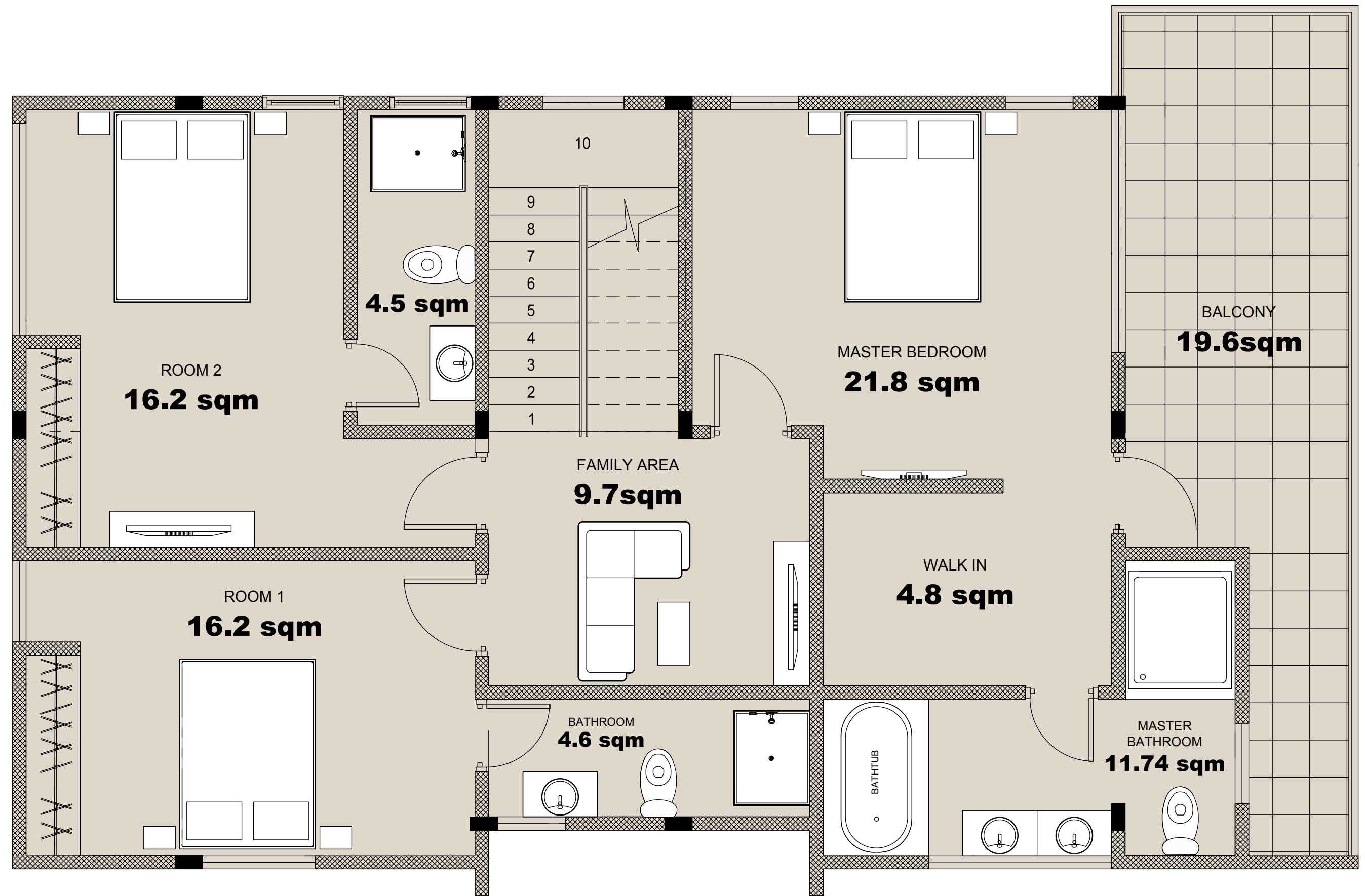
FIRST FLOOR PLAN
130SQM

Typology 2



GROUND FLOOR PLAN

100SQM



FIRST FLOOR PLAN
130 SQM



CONTACT DETAILS

ROSEWOOD REAL ESTATE SERVICES

 +233 20 977 6428 ; +233 27 155 5666 ; +44 7437 586493

 info@rosewoodgh.com

 [@rosewoodghana](https://www.instagram.com/rosewoodghana)

 [Rosewood Real Estate Services](https://www.facebook.com/RosewoodRealEstateServices)

 www.rosewoodgh.com